

NEWSLETTER

Job4dis New model of employment guidance for people with disabilities in Europe

Welcome to our 1st Newsletter

Erasmus + Project, Job4Dis, aims to create a "New Model of Employment Guidance for People with Disabilities in Europe", that is, we want to generate a tool that helps employment counsellors who assist people with disabilities in search of employment, to do it properly, so that all people with disabilities can have an effective care in employment services anywhere in Europe.

Three countries are involved in this project: Romania, Greece and Spain.

In order to gain a better understanding of the guidance process in each of these countries, a survey was carried out among the professionals who currently carry out guidance tasks, focusing on the care of people with disabilities.



SHORT DESCRIPTION OF THE PROJECT

As stated in the previous section, unemployment of people with disabilities in Europe is a serious problem for this group. The measures to improve the employability of these people and to promote employment are very

different in the countries of the European Union. The situation generated by Covid 19 has meant a paradigm shift in terms of job search, and has highlighted the need to use digital resources and online communication systems to access the labour market.

With this project we want to develop an employment guidance model that can be used by all member countries of the European Union, which seeks to develop the autonomy and the development of digital skills of unemployed people with disabilities.



NEWSLETTER

As a first step we will create a partnership with : to carry out an analysis of the employment guidance models for people with disabilities that are being used in each country. For this purpose we will create a tool that will help us to measure the effectiveness of the actions that are currently

carried out in Spain (partners), and that will allow us to know the different models that are used.

As a result of this research process, we will create a comparative table with the most relevant items. After evaluating these items we will design a model of career guidance, which

can be used by the rest of the member states.

Finally, we will evaluate the new model of vocational guidance, through a questionnaire that we will provide to the professionals who collaborate in the development of this project and who are linked to vocational guidance, to the labour market, to the companies, and to the disabled people themselves.



Let us be the compass that helps people with disabilities find their place in society.

The results of this survey will give us information about the changes to be made in the new guidance model, in order to improve it, and to make all the participants aware of this change of paradigm in the search for employment, from the guidance counsellors themselves, so that they

leave aside the paternalism and the facilitator profile, and the users with disabilities to assume their responsibilities and not to depend on anyone.

SPECIFIC OBJECTIVES

To know the situation of career guidance in the countries that form the consortium of this project.

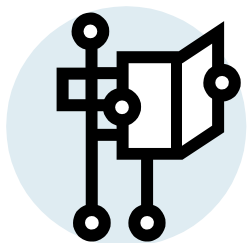
To share experiences and good practices among the partner countries.

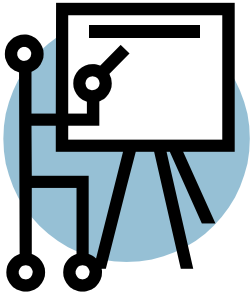
To develop tools to measure the effectiveness of the different models of career guidance

To raise awareness and promote the improvement of the conditions of the employment guidance processes towards the employment of people with disabilities.

Describe the most appropriate guidance models according to the type of disability.

To seek the involvement and collaboration of public administrations and the business sector in the quality integration of people with disabilities.





Caption describing picture or graphic.

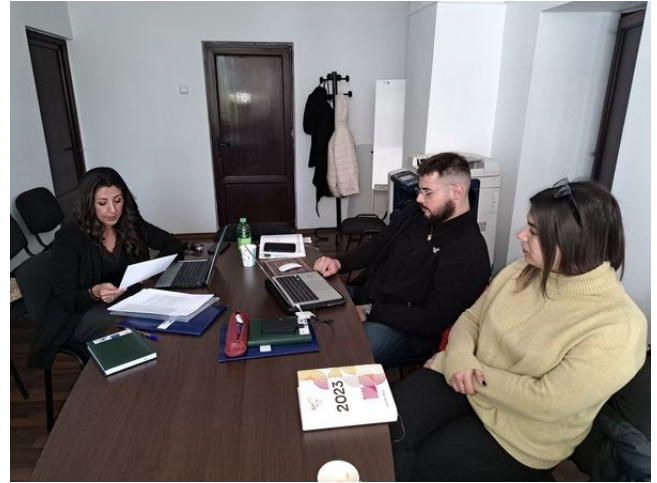
FINAL PRODUCTS

With this project we are going to obtain 2 results:

R1: Quality assessment tool in career guidance: to analyse the models of career guidance for people with disabilities that are being used in each country.

Comparative table of the models: similarities and differences.

R2: Manual "JOB4DIS" with the new guidance model



TRANSNATIONAL PROJECT MEETING 1 – ROMANIA

The activities carried out during the meeting:

- Presentation of the participants and partner organisations

Project overview: partnership, duration, objectives, target groups, activities and working plan, distribution of tasks, results

Partner agreements

Distribution of the grant and

budget management

Monitoring and evaluation, communication, information and dissemination

Discussions on website and on the end products of the project

Presenting the activity "Transnational comparison of professional orientation"

Share the experience of each member in the development

of this activity (difficulties, collaborations established, contributions that this activity has provided to each organization)

Organization and planning of the next actions to be carried out, distribution of tasks for the development of the manual "Job4Dis"

TRANSNATIONAL PROJECT MEETING 2 – GREECE

The activities carried out during the meeting:

Presentation of the Job4dis Manual.

2. Contributions for possible modifications, changes or improvements of this manual.

3. Choice of the final design of the Manual.

4. Definition of the actions to disseminate the results of the

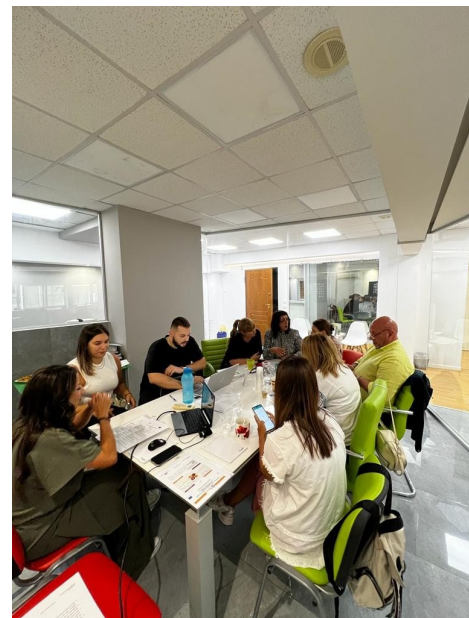
project.

5. Evaluation of Activity 2.

6. Proposal for the presentation of the October 2023 call for proposals. New Project. Job4dis Training.

7. Contributions of the partners.

8. Review of the documentation to check that everything is correct for the justification of the project.





Co-funded by
the European Union

www.job4dis.eu.com



MANUAL JOB4DIS—NEW MODEL OF EMPLOYMENT GUIDANCE FOR PEOPLE WITH DISABILITIES IN EUROPE

This manual is part of the Erasmus + Project, Job4Dis, which aims to create a "New Model of Employment Guidance for People with Disabilities in Europe", that is, we want to generate a tool that helps employment counsellors who assist people with disabilities in search of employment, to

do it properly, so that all people with disabilities can have an effective care in employment services anywhere in Europe. Three countries are involved in this project: Romania, Greece and Spain.

In order to gain a better understanding of the guidance

process in each of these countries, a survey was carried out among the professionals who currently carry out guidance tasks, focusing on the care of people with disabilities.

After making a comparative table with the results of this survey (Annex 1), we can observe the most significant

Funded by the European Union. Views and opinions expressed are however those of the author(s) only and do not necessarily reflect those of the European Union or the European Union Programmes Agency (EUPA). Neither the European Union nor the granting authority can be held responsible for them.